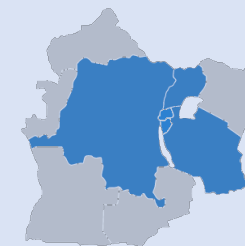
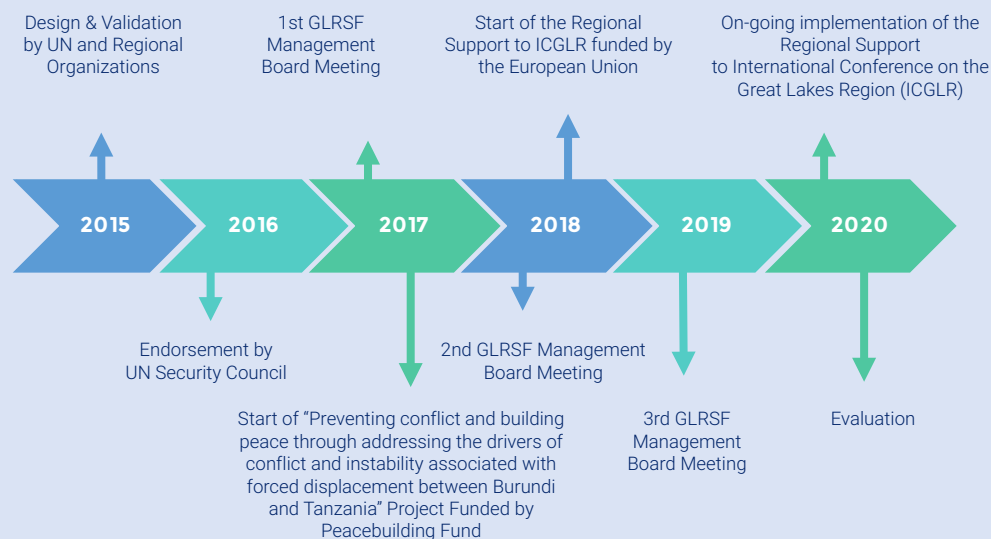


KEY HIGHLIGHTS OF THE GLRSF PROCESS



UNITED NATIONS GREAT LAKES REGIONAL STRATEGIC FRAMEWORK



Website: www.glrsf.org | Twitter: @UN_GLRSF | Facebook: @UNGLRSF

For more information, please contact us:
info.glrsf@one.un.org

2019 Edition

The United Nations developed the Great Lakes Regional Strategic Framework (GLRSF) based on a regional analysis of conflict drivers. The framework aligns the development work of UN agencies with the Road Map of the UN Special Envoy for the Great Lakes which supports the Governments in the region in implementing the Peace, Security and Cooperation Framework for the Democratic Republic of Congo (DRC) and the region. In a cross-pillar approach, the UN and its partners have joined forces at cross-border and regional level to address the diverse peacebuilding challenges of the region with an interdisciplinary, cross-cutting, multi-level approach.



WHY A REGIONAL STRATEGIC FRAMEWORK?

The drivers of conflict in the Great Lakes region are cross-border in nature and thus need to be addressed in a comprehensive manner by ensuring a concerted and coordinated approach across state boundaries. Therefore, the United Nations is acting increasingly as ONE in the Great Lakes region, within the context of the Peace, Security and Cooperation Framework for the Democratic Republic of Congo and the region and the Great Lakes Regional Strategic Framework (GLRSF). The regional cross-border political advocacy efforts and development efforts go hand in hand.

GEOGRAPHICAL FOCUS

The border areas between Burundi, the DRC, Rwanda, Tanzania and Uganda remain the main theatre for instability in this region. Such instability has resulted in tensions within and between communities, human rights violations and abuses, new and continuing cross-border movements of displaced persons and challenges to cross-border trade.

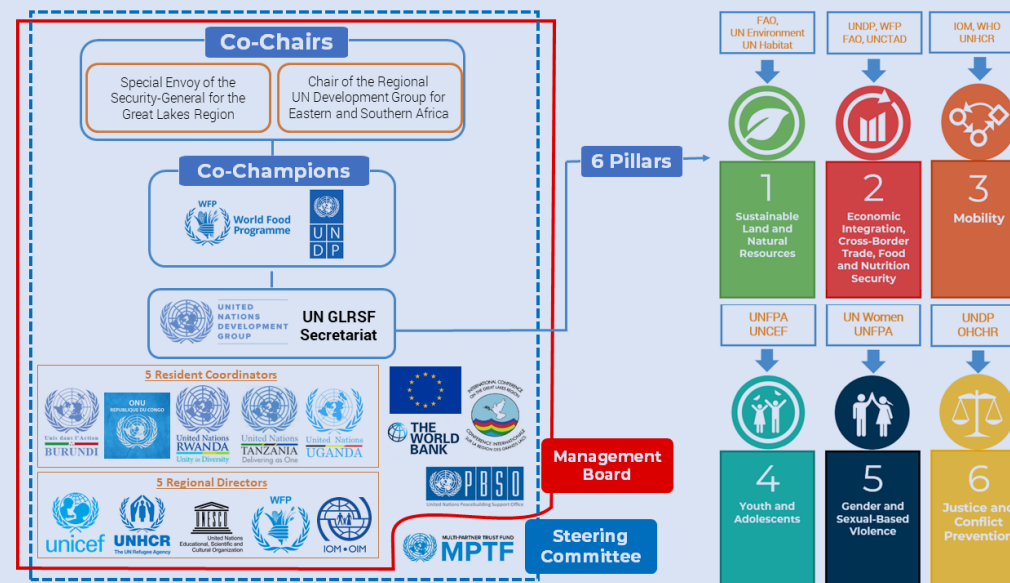


OUR CONTRIBUTION TO THE SUSTAINABLE DEVELOPMENT GOALS



THE MANAGEMENT STRUCTURE & THE 6 THEMATIC PILLARS

The Management Board and the Steering Committee ensure effective management, implementation and accountability of the framework. Each of the 6 thematic Pillars provide a complementary approach to ensure comprehensive response to both humanitarian and development issues.



GLRSF KEY DONORS



HOW CAN YOU SUPPORT?

The Great Lakes region hosts diverse challenges and a multitude of stakeholders, initiatives and investments. The GLRSF estimates a financial need of almost USD 95 million. To support and finance the GLRSF in a strategic way, the Great Lakes Region Cross Border Fund was established. This fund is a pooled funding mechanism that facilitates coherence and coordination among UN entities for cross-border and regional activities.

(<http://mptf.undp.org/factsheet/fund/GLR00>)

For more information, please contact us:

info.glrsf@one.un.org